

RM-32C CONTROLLER UPGRADE

This process can be done via the Data Sign Service Centres via our booking system - If location not suitable, a qualified auto electrical service provider can be used. Supporting documents will be required for warranty purposes.

This upgrade process utilises 'minimal' interference or removal of equipment and parts. With 'old' equipment, it is known that touching, removing and reinstating parts can result in 'other' things going wrong and having further issues to deal with. As this is outside our control, Data Signs does not accept responsibility for this.



Please view this video as part of the document.



Scan the QR code and select "Removing and Replacing VMS Controller" video.



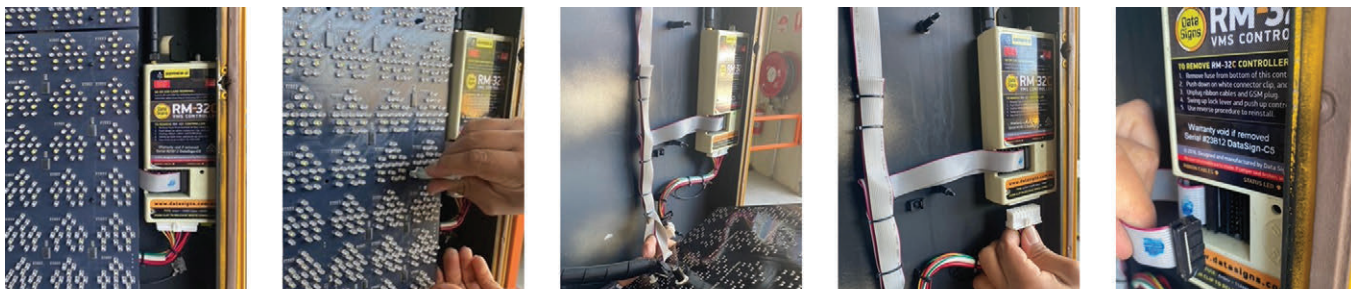
Data Signs
AUSTRALIA
Since 1976

 datasigns.com.au
 1300 850 785

CONTROLLER UPGRADE INSTRUCTIONS

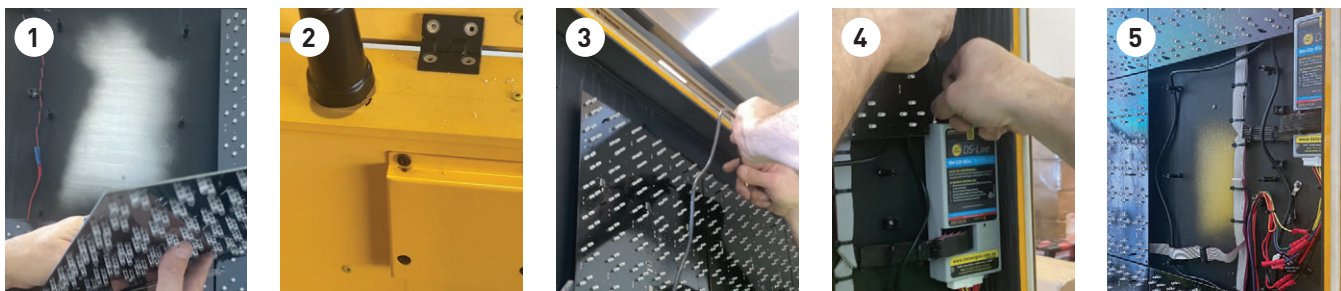
1. BEFORE COMMENCING ANY WORK, remove ALL fuses from the batteries.

- Remove the LED panel next to the controller, **carefully** unplug all ribbon cables and connectors and the aerial connectors from the controller.
- Remove the RM-32C Controller and ship to Data Sign Service Centre for upgrade conversion. Fill out the *Service Request Form* as per Ticket link.



FITTING NEW AERIAL Watch YouTube link Below for this process.

- Remove top left panel
- Mark, drill, seal and fit aerial
- Route aerial cable and fit right side aerial
- Fit both aerial cables to controller
- Put LED panel back.



SIM CARD

A Data Signs SIM card is supplied and fitted in the retrofitted controller for connection to the DS-Live programming platform and for communications support and diagnostics.

Hand back the old Sim card to your previous service provider for credit or discard.

Go through the complete upgrade procedure again ensure everything is as per instructions. Re-insert fuses to power up the new controller.

The sign when switched on will be connected to the DS-Live™ platform. You can also use the AppVMS™ Mobile Phone App to control the sign.



RECOMMENDED REPLACEMENTS

If fan cover not fitted, replace fans and add cover. Fit new weather seal.

FAN REPLACEMENT



FAN COVERS



SIGN HEAD SEAL TAPE



YouTube

Watch YouTube **"3G Controller Upgrade Process"** video for these optional items and fitting the optional Control Panel

Video times: Fan: 3:23 / Seal Installation: 11:19 / Removing and Replacing Control Panel: 12:54